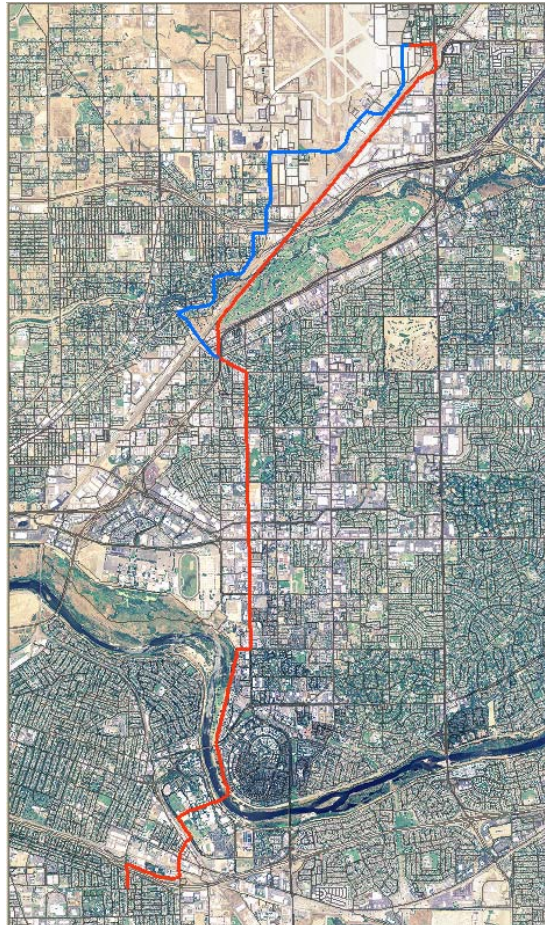




Tahoe Terrace / CSUS

(scroll to bottom for written directions)



Route from Tahoe Terrace/CSUS to McClellan Park shown in red.

- Over HW50 on 59th St.
- Right onto S Street to 65th
- Left on 65th to Elvas
- Briefly on Elvas to Hornet Crossing into CSUS.
- Left on State University Dr to Sinclair.
- Right on to Sinclair, continue to and over Guy West bridge.
- Left onto American River Trail.
- Exit trail right over levee to Northrop (0.5 km past golf course)
- Northrop to left on Howe
- Howe to left on Marconi
- Marconi across Biz80 to right on Connie.
- Connie merges into Roseville Rd.
- Roseville Rd to Watt.
- Left on Watt to Peacekeeper.
- Peacekeeper to office at Dudley

Route is also valid for starting points in Tahoe Park, Elmhurst and East Sac. Alternate route to avoid Roseville road (some sections are narrow and car speeds are high) is shown in blue. Many variations on this are possible.