



THE PAVEMENT PRESS

MCCLELLAN PARK TMA
BRAGGER@MCCLELLANPARKTMA.ORG
WWW.MCCLELLANPARKTMA.ORG
916.570.5314

VOLUME 14
1/01/2009

HAPPY **NEW** YEAR TO EVERYONE AT MCCLELLAN PARK!



SHUTTLE IS HERE TO SERVE YOU!

Improved Shuttle Times: The morning Shuttle route has improved its times and continues to be on schedule at all stops. You can check out the Shuttle times and route by visiting the TMA website or www.sact.com and look up Route 85. **Ride for only \$1.10 or for FREE if you have a monthly pass.**

New Shuttle Stops: The TMA and Regional Transit will be moving the current Shuttle stop on the northeast corner of Forcum and Dudley to the northwest side of Dudley and Forcum to redirect the Shuttle to turn left onto Dudley Boulevard from South Forcum and then right onto Kilzer and continue with the route to the west district of McClellan Park.

BIKE LOCKERS ARE FULL!

McClellan Park cyclists keep their equipment safe and secure by using the TMA lockers. All lockers are occupied and TMA is looking to have two new lockers built and installed for the Grant Community Charter School's administrative staff on Arnold Avenue. **Remember that the Shuttle has a bike rack and you can catch a ride for only \$1.10.**



McClellan Park

Transportation Management Association

SUREWEST GETS A FRESH LOOK ON CARPOOL SPACES!

With the growing interest of carpooling at Surewest, the TMA gave their carpool spaces a fresh coat of paint to keep non-permitted vehicles out of these spaces.



WHAT'S INSIDE THIS ISSUE!

ROAD IMPROVEMENTS

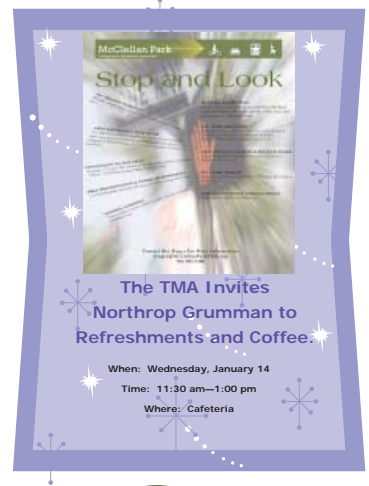
NEW SHUTTLE STOPS

NEW VANPOOLS...



NORTHROP GRUMMAN EXPANDS AND GROWS WITH THE TMA

With new hires at Northrop Grumman in 2008, the TMA hosted a reception for their employees on Wed, Jan 14th to educate employees on all aspects of the commute program. Contact the TMA to host a reception for your employees at brager@mcclellanparktma.org.



ELK GROVE VANPOOL FORMING!

Commuters from Elk Grove and the Pocket Area are meeting to form a vanpool. If you are interested and would like more information on joining this vanpool, please contact the TMA at brager@mcclellanparktma.org.

MCCLELLAN PARK ROADS CONTINUE TO BE IMPROVED

Road improvements will start up again once the dry weather is here! The County of Sacramento and McClellan Park will be working together in 2009 to:

- Scurry seal coat the street and restripe crosswalks down Luce Avenue from Howard Street to James Way.
- Resurface South Forcum to McClellan Park Drive.
- Resurface Dudley Boulevard from James Way to Arnold Avenue.



"We've worked with Enterprise for years. Customer service is their top priority."

Join the Club!

TELECOMMUTING IS THE QUIET REVOLUTION FOR 2009:

By 2009, 14 million workers will not be driving into the office. Telecommuting will become a mainstay in Corporate America. The number of teleworkers will hit 14 million by 2009. Employees from McClellan Park have commented to the TMA on how great it is to be able to work remotely if traveling to different locations or on business trips. Contact the TMA if your company has telecommuters and would like a featured article in the next Pavement Press.



HOW TO RIDE TRANSIT & SHUTTLE FOR FREE!
IN OUR FEB ISSUE OF THE PAVEMENT PRESS
REGIONAL TRANSIT & SHUTTLE
WILL BE FREE FOR 1 DAY TO MCCLELLAN PARK EMPLOYEES
2/2 - 2/6